

3 AA BATTERIES

INTRINSICALLY SAFE DUAL-LIGHT FLASHLIGHT

XPP-5422GX

NIGHTSTICK[®]
Life Depends on Light™



DUAL-LIGHT

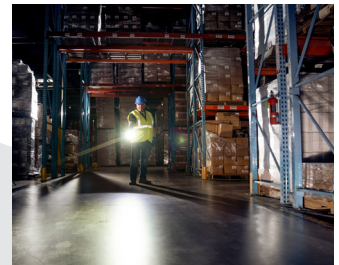
300-lumen Dual-Light provides simultaneous **flashlight and floodlight** operation

IP-67
DUST/WATER
PROOF

CLASS I
DIV 1



Simultaneous **flashlight and floodlight** operation



Sharp focused flashlight beam



Durable polymer body is **impact & chemical resistant**



Large, textured buttons



300 LUMENS

1-800-233-2155 • 1-469-326-9400 • nightstick.com

© 2021 Bayco Products Inc. Items shown are intended as a visual representation for informational purposes only and are subject to change without notice. Visit nightstick.com for product updates.

INTRINSICALLY SAFE DUAL-LIGHT FLASHLIGHT

3 AA BATTERIES (not included)

ITEM NUMBER/UPC

- XPP-5422GX, UPC 0 1739880584 1

MARKET APPLICATIONS

- Hazardous work environments, industrial, fire & rescue

CERTIFICATIONS

- ETLus, CE, UKCA

CASE MATERIAL

- Engineered polymer

LUMENS/RUNTIME

FLASHLIGHT

- 235L, 14 hrs. runtime

FLOODLIGHT

- 130L, 20 hrs. runtime

DUAL-LIGHT

- 300L, 10 hrs. runtime

CANDELA

- 7,970

BEAM DISTANCE

- 187 m

WATER RATING

- ANSI IP-67 dustproof / waterproof

DROP RATING

- 2 meters

DIMENSIONS

- LENGTH: 7.0 in (178 mm)

- HANDLE DIAMETER: 1.1 in x 1.5 in (28 mm x 38 mm)

- HEAD DIAMETER: 1.8 in (46 mm)

- WEIGHT: 6.9 oz (196 g)

POWER SOURCE

- AA batteries (not included)

WARRANTY





- Limited lifetime

WHAT'S INCLUDED

- Flashlight

- Removable lanyard

- Instruction manual

FL 1 STANDARD	FLASH	FLOOD	DUAL-LIGHT
	235 LUMENS	130 LUMENS	300 LUMENS
	14h	20h	10h
	187m		
	7970cd		

Bayco Products, Inc. XPP-5422GX
640 S. Sanden Blvd.
Wylie, TX 75098



Intertek

ID 4003544
 INTRINSICALLY SAFE
 SECURITE INTRINSEQUE



CLASS I DIV 1 GRPS A-D T3
 CLASS II & III DIV 1 GRPS E-G T135C
 CLASS I ZONE 0 IIC T3
 CLASS II ZONE 20 IIIC T135C

-20°C ≤ Tamb ≤ +40°C
 1.5V/Cell AA Alkaline

